

PRODUCT CATALOG

PASSENGER & LIGHT TRUCK TYRES



A BRIEF RIDE THROUGH HISTORY

After a decade of promising growth, Armstrong purchases a small tire manufacturing plant in New Haven, Connecticut.

1912 ←

A tire dealer in New Jersey by the name of George F. Armstrong entered the tube & pneumatic tire industry in a tiny loft.

→ **1922**

1961 ←

Armstrong became the fifth-largest tire maker in the world and ranked amongst the Fortune 500 companies.

Armstrong introduced the first bias-belted fiberglass tire, one of many inventions.

→ **1965**

1970 ←

The Armstrong Rubber Company moved into its \$7 million headquarters designed by renowned architect Michael Brauer in New Haven, Connecticut.

Armstrong achieved a record sales volume worth \$1 billion.

→ **1986**

1988 ←

Armstrong was acquired by Pirelli S.p.A, becoming Pirelli Armstrong Tire Corporation.

Pirelli phased out the Armstrong brand in the latter half of the 1990's.

→ **1990**

2012 ←

ZAFCO acquires the Armstrong brand from Pirelli with the goal of rebuilding it from the ground up.

Newly reengineered, the Armstrong brand returns to the tire industry, continuing the Armstrong legacy of making premium products by quality-minded people.

→ **2015**

ABOUT US

Armstrong Tyres was founded in 1912 by George F. Armstrong in a small New Jersey loft. By the early 1960s, Armstrong had become a well-known tyre brand and the 5th largest tyre manufacturer in the world.

Over the past years, we've been steadily working to bring back this trusted American tyre brand - and modernising it into a premium product offering. The next generation of Armstrong tyres is dedicated to quality, value and safety. We're proud of continuing the Armstrong legacy of making quality tyres by quality-minded people.



WHY ARMSTRONG?

VALUE-DRIVEN PRICING PROGRAM

Our unique pricing program was designed with our dealers in mind and is positioned to increase your profit margins so you can easily grow your business and stay competitive in today's modern tire industry.

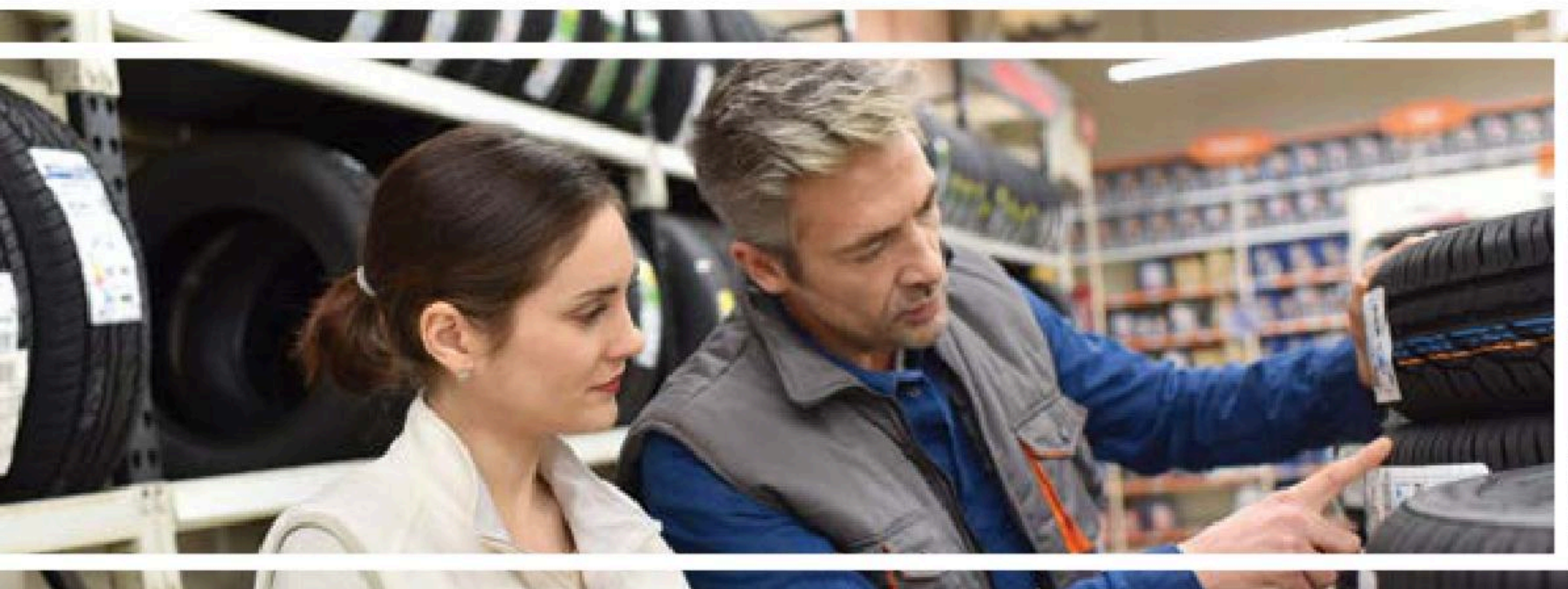


RECOGNIZABLE NAME WITH A RICH LEGACY

The Armstrong name was once a household name listed as a Fortune 500 company and the 5th largest tire manufacturer in the world. We aim to restore Armstrong's legacy and solidify its place in the tire industry.

DOMESTIC DISTRIBUTION PROGRAM

Our tires are manufactured in our state-of-the-art factory just outside Bangkok, Thailand and are distributed from our warehouses throughout the United States to ensure speedy supply and readily available inventory.



A STELLAR SUITE OF SELL-OUT SUPPORT

Armstrong dealers receive sell-out support including training resources, marketing programs, and access to our Dealer Portal so you have all the sales tools you need at your fingertips.

A WARRANTY DESIGNED FOR SELLING

Armstrong's built-to-last warranty includes a two-year road hazard coverage, roadside assistance, mileage warranty up to 85,000 miles, and a 30-day money back guarantee.





BLU-TRAC PC



This next generation of passenger tire is designed to deliver a smoother ride with reduced road noise and more even tread wear, while also providing enhanced traction and braking ability in both wet and dry conditions.



6 YEAR LIMITED WARRANTY



A SYMMETRIC TREAD DESIGN.

Symmetric tread design leads to smoother rolling on the road and even tread wear throughout the tire's lifespan.



A SET OF DYNAMIC INNER RIBS.

A three-across set of inner ribs reduces road noise and improves ride comfort.



A SELF-LOCKING SIPES SYSTEM.

A self-locking sipes system ensures exceptional water evacuation to enhance road traction and braking.



LATERAL CHAMFERED EDGES.

Chamfered edges of the lateral grooves reduces rolling resistance and increases tread rigidity.

BLU-TRAC PC / UTQG 700 A A / M+S									
RIM DIAMETER	SERIES	SIZE	LOAD INDEX / SPEED SYMBOL	MAXIMUM LOAD	MAX. INFLATION PRESSURE	RIM WIDTH	SECTION WIDTH	OVERALL DIAMETER	TREAD DEPTH
				LBS	PSI	INCHES	INCHES	INCHES	32NDS
17	60	225/60R17	99V	1709	44	6.5	9.0	27.8	10
	65	215/65R17	99V	1709	44	6.5	8.7	28.1	10
16	55	185/55R16	87H XL	1201	50	6.0	7.6	24.0	10
		205/55R16	91H	1356	44	6.5	8.3	24.9	9
		205/55R16	94V XL	1477	50	6.5	8.3	24.9	9
		195/60R16*	89V	1279	44	6.0	7.8	25.2	9
	60	205/60R16	92V	1389	44	6.0	8.1	25.6	9
		215/60R16	99V XL	1709	50	6.5	8.6	26.1	10
		225/60R16	102V XL	1874	50	6.5	9.0	26.5	10
		235/60R16	100V	1764	44	7.0	9.4	27.0	10
		205/65R16	95V	1521	44	6.0	8.2	26.5	11
		215/65R16	102H XL	1874	50	6.5	8.7	26.9	10
		235/65R16	103H	1929	44	7.0	9.4	27.9	10
	65	165/50R15	76T XL	882	50	5.0	6.7	21.6	9
		175/60R15	81H	1019	44	5.0	7.1	23.2	10
		185/60R15	88H XL	1235	50	5.5	7.3	23.7	10
		195/60R15	88H	1235	44	6.0	7.9	24.2	10
15	65	175/65R15	84H	1102	44	5.0	7.0	23.9	10
		185/65R15	88H	1235	44	5.5	7.4	24.4	9
		195/65R15	95H XL	1521	50	6.0	7.9	25.0	9
		195/65R15	91V	1356	44	6.0	7.9	25.0	9
	70	205/65R15	99H XL	1709	50	6.0	8.2	25.4	9
		205/70R15	100H XL	1764	50	6.0	8.3	26.3	9
		215/70R15	98H	1653	44	6.5	8.7	26.9	10
		235/75R15*	109T XL	2271	50	6.5	9.3	28.8	10
	75	165/55R14	72T	783	44	5.0	6.7	21.2	9
		165/60R14	75H	853	44	5.0	6.7	21.8	10
14	60	185/60R14	82H	1047	44	5.5	7.4	22.6	9
		155/65R14	75T	853	44	4.5	6.2	21.9	9
		165/65R14	79T	963	44	5.0	6.8	22.4	9
		175/65R14	82H	1047	44	5.0	7.1	23.0	9
	65	185/65R14	86H	1168	44	5.5	7.4	23.5	9
		165/70R14	81T	1019	44	5.0	6.7	23.1	9
		175/70R14	88T XL	1235	50	5.0	6.9	23.6	9
		185/70R14	88H	1235	44	5.5	7.6	24.3	9
	70	195/70R14	95H XL	1521	50	6.0	8.0	24.8	9
		155/65R13	73T	805	44	4.5	6.2	20.8	9
		165/65R13	77T	908	44	5.0	6.8	21.3	10
		145/70R13	71T	761	44	4.5	6.0	20.9	10
13	70	155/70R13	75T	853	44	4.5	6.2	21.6	9
		165/70R13	79T	963	44	5.0	6.7	21.9	9
		175/70R13	82T	1047	44	5.0	6.9	22.5	9
		155/80R13	79T	963	44	4.5	6.3	22.6	9
	80	155/80R13	79T	963	44	4.5	6.3	22.6	9
		155/80R13	79T	963	44	4.5	6.3	22.6	9

* Newly released sizes

BLU-TRAC HP



This Ultra High Performance tire features circumferential and sub-straight grooves to deliver enhanced water evacuation, handling, and stability. Its sipe design provides increased grip, safety, and comfort, while a silent groove wall reduces outside noise.



6 YEAR LIMITED WARRANTY



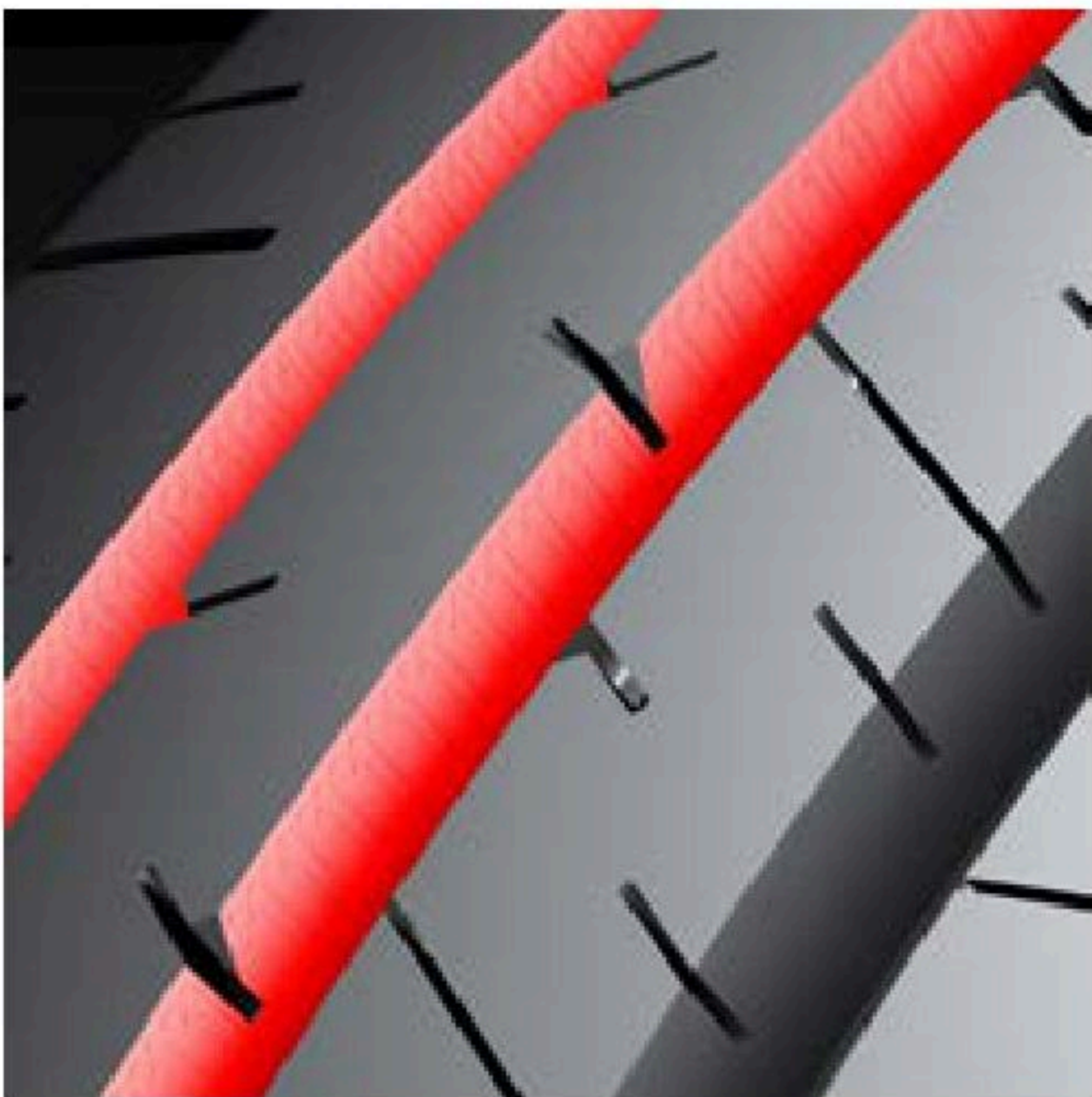
FOUR WIDE CIRCUMFERENTIAL GROOVES.
 These four grooves, which span the circumference of the tire, work in conjunction with the lateral grooves to evacuate water rapidly, leading to improved handling and traction.



A VARIETY OF SIPE DESIGNS.
 A variety of sipes distributed on the inner ribs creates extra gripping surfaces for enhanced safety and ride comfort.



SUB-STRAIGHT GROOVES.
 Sub-straight grooves in the outer shoulders improve cornering precision and stability.



AN INNOVATIVE SILENT GROOVE WALL.
 The silent groove wall reduces outer noise by disrupting the air flow through vertical serrations.

BLU-TRAC HP / UTQG 340 A A / M+S									
RIM DIAMETER	SERIES	SIZE	LOAD INDEX / SPEED SYMBOL	MAXIMUM LOAD	MAX. INFLATION PRESSURE	RIM WIDTH	SECTION WIDTH	OVERALL DIAMETER	TREAD DEPTH
				LBS	PSI	INCHES	INCHES	INCHES	32NDS
21	35	275/35R21	103Y XL	1929	50	9.5	11.0	28.9	9
20	35	225/35R20	90Y XL	1323	50	8.0	8.9	26.6	9
		245/35R20	95Y XL	1521	50	8.5	9.8	26.9	10
		255/35R20	97Y XL	1609	50	9.0	10.4	27.2	9
		275/35R20	102Y XL	1874	50	9.5	10.4	28.0	9
		245/40R20	99Y XL	1709	50	8.5	9.4	27.7	9
19	35	225/35R19	88W XL	1235	50	8.0	9.1	25.3	10
		235/35R19	91W XL	1356	50	8.5	9.5	25.6	10
		245/35R19	93W XL	1433	50	8.5	9.8	25.9	10
		255/35R19	96W XL	1565	50	9.0	10.1	26.0	9
		265/35R19*	98Y XL	1653	50	9.5	10.3	26.4	9
		275/35R19	100Y XL	1764	50	9.5	10.6	26.9	9
	40	225/40R19*	93Y XL	1433	50	8.0	8.9	26.4	9
		235/40R19*	96Y XL	1565	50	8.5	9.2	26.4	9
		245/40R19	98Y XL	1653	50	8.5	9.8	27.1	10
		255/40R19*	100Y XL	1764	50	9.0	10.0	27.2	10
		275/40R19	105Y XL	2039	50	9.5	10.6	28.0	9
	45	235/45R19*	99Y XL	1709	50	8.0	9.3	27.3	9
		245/45R19	102Y XL	1874	50	8.0	9.6	28.0	10
18	35	255/35R18	94W XL	1477	50	9.0	10.2	24.9	10
		265/35R18*	97Y XL	1609	50	9.5	10.4	25.3	9
		275/35R18*	99Y XL	1709	50	9.5	10.7	25.6	9
	40	205/40R18*	86Y XL	1168	50	7.5	8.0	24.7	10
		225/40R18	92Y XL	1389	50	8.0	9.1	25.1	9
		235/40R18	95W XL	1521	50	8.5	9.5	25.4	10
		245/40R18	97W XL	1609	50	8.5	9.8	25.7	9
		255/40R18*	99Y XL	1709	50	9.0	10.0	26.2	9
		275/40R18*	103Y XL	1929	50	9.5	10.8	26.7	9
	45	215/45R18*	93Y XL	1433	50	7.0	8.1	25.9	10
		225/45R18	95W XL	1521	50	7.5	8.9	26.1	9
		235/45R18	98W XL	1653	50	8.0	9.3	26.3	10
		245/45R18	100W XL	1764	50	8.0	9.6	26.7	9
		255/45R18	103W XL	1929	50	8.5	10.0	27.0	10
		225/50R18*	99W XL	1709	50	7.0	8.9	27.0	9
	50	235/50R18	101W XL	1819	50	7.5	9.5	27.3	10
		245/50R18*	104W XL	1984	50	7.5	9.8	27.8	10
	60	225/60R18	100H	1764	44	6.5	9.2	28.6	10
17	40	205/40R17	84Y XL	1102	50	7.5	8.3	23.5	10
		215/40R17	87W XL	1201	50	7.5	8.6	23.9	10
		245/40R17	95W XL	1521	50	8.5	9.7	24.7	10
	45	205/45R17	88W XL	1235	50	7.0	8.1	24.2	10
		215/45R17	91W XL	1356	50	7.0	8.4	24.7	9
		225/45R17	94Y XL	1477	50	7.5	8.9	25.2	9

* Newly released sizes

BLU-TRAC HP / UTQG 340 A A / M+S

RIM DIAMETER	SERIES	SIZE	LOAD INDEX / SPEED SYMBOL	MAXIMUM LOAD	MAX. INFLATION PRESSURE	RIM WIDTH	SECTION WIDTH	OVERALL DIAMETER	TREAD DEPTH
				LBS	PSI	INCHES	INCHES	INCHES	32NDS
17	45	235/45R17	97W XL	1609	50	8.0	9.3	25.4	9
		245/45R17	99W XL	1709	50	8.0	9.6	25.7	9
	50	205/50R17	93W XL	1433	50	6.5	8.4	25.3	9
		215/50R17	95W XL	1521	50	7.0	8.6	25.5	9
		225/50R17	98W XL	1653	50	7.0	8.9	25.9	10
		235/50R17*	100Y XL	1764	50	7.5	9.5	26.3	9
		245/50R17*	99W	1709	44	7.5	9.9	26.7	10
		205/55R17*	95W XL	1521	50	6.5	8.2	26.1	9
	55	215/55R17	98W XL	1653	50	7.0	8.9	26.4	9
		225/55R17	101W XL	1819	50	7.0	9.0	26.9	9
		235/55R17	103W XL	1929	50	7.5	9.7	27.1	10
	60	215/60R17	96H	1565	44	6.5	8.7	27.1	10
16	45	195/45R16	84V XL	1102	50	6.5	7.7	23.0	10
		205/45R16	87W XL	1201	50	7.0	8.1	23.2	10
	50	195/50R16	88V XL	1235	50	6.0	7.8	23.7	10
		205/50R16	87Y	1202	44	6.5	8.2	24.1	10
		225/50R16	92W	1389	44	7.0	9.2	24.8	10
		195/55R16	91V XL	1356	50	6.0	8.0	24.4	10
	55	205/55R16	94W XL	1477	50	6.5	8.4	24.9	9
		215/55R16	97W XL	1609	50	7.0	8.9	25.1	9
		225/55R16	99W XL	1709	50	7.0	9.1	25.6	9
15	50	195/50R15	86V XL	1168	50	6.0	7.8	22.7	10
	55	185/55R15	82V	1047	44	6.0	7.6	23.0	10
		195/55R15	85V	1135	44	6.0	8.0	23.4	10
14	55	185/55R14	80H	992	44	6.0	7.6	22.0	10

* Newly released sizes

UPCOMING SIZES			
RIM DIAMETER	SERIES	SIZE	LI/SS
20	30	225/30R20	85Y XL
		245/30R20	93Y XL
		255/30R20	92Y XL
		275/30R20	97Y XL
		285/30R20	99Y XL
	35	235/35R20	92Y XL
	40	235/40R20	96Y XL
		255/40R20	101Y XL
19	30	265/30R19	93Y XL
		285/30R19	98Y XL
	35	215/35R19	85Y XL
	45	255/45R19	104Y XL
18	35	225/35R18	87Y XL
		245/35R18	92Y XL
	40	215/40R18	89Y XL
	50	215/50R18	97W XL
17	35	225/35R17	86Y XL
	40	195/40R17	81V XL
		255/40R17	98W XL
16	45	215/45R16	90W XL

TRU-TRAC SU



True to the Armstrong TRU-TRAC legacy, this SUV tire provides reduced rolling resistance and increased wet grip, plus a shoulder base that inhibits block wriggling and tire deformity. Stiff sidewalls absorb impact and improve ride comfort while a wide footprint enhances overall driving safety and stability.



6 YEAR LIMITED
WARRANTY



CROSS-LINKED SIPES.

Specially engineered cross-linked sipes on the inner ribs reduce rolling resistance and increase grip in wet conditions.



A WIDE FOOTPRINT.

A wide "footprint" - the portion of the tire's tread that makes contact with the road surface - provides overall driving safety and stability.



A UNIQUE SIDEWALL CONSTRUCTION.

A unique sidewall construction absorbs impact on uneven roads to enhance ride comfort.



A SHOULDER BOTTOM BASE.

A shoulder bottom base and blocks retain continuity by reducing block wriggling and tire deformation.

TRU-TRAC SU / UTQG 440 A A / M+S										
RIM DIAMETER	SERIES	SIZE	LOAD INDEX / SPEED SYMBOL		MAXIMUM LOAD	MAX. INFLATION PRESSURE	RIM WIDTH	SECTION WIDTH	OVERALL DIAMETER	TREAD DEPTH
					LBS	PSI	INCHES	INCHES	INCHES	32NDS
24	35	295/35R24 *	110Y	XL	2337	50	10.5	11.4	32.4	10
		305/35R24 *	112W	XL	2469	50	11.0	12.0	32.5	10
22	35	265/35R22 *	102Y	XL	1874	50	9.5	10.2	29.4	9
		315/35R22	111Y	XL	2403	50	11.0	12.2	30.9	9
	40	265/40R22	106Y	XL	2094	50	9.5	10.5	30.6	9
		275/40R22	108Y	XL	2205	50	9.5	10.7	30.9	9
		285/40R22	110Y	XL	2337	50	10.0	11.1	31.0	9
		305/40R22 *	114W	XL	2601	50	11.0	12.4	31.6	10
		275/45R22 *	112W	XL	2469	50	9.0	10.6	31.8	9
		285/45R22	114Y	XL	2600	50	9.5	11.2	32.1	9
	50	275/50R22 *	111V		2403	44	8.5	11.0	32.9	9
	21	40	265/40R21	105Y	XL	2039	50	9.5	10.7	29.3
295/40R21			111Y	XL	2403	50	10.5	11.9	30.3	9
45		265/45R21	108W	XL	2205	50	9.0	10.5	30.4	9
		275/45R21	110Y	XL	2337	50	9.0	10.7	30.7	9
50		275/50R21	113V	XL	2535	50	8.5	11.2	31.9	9
20	35	315/35R20	110Y	XL	2337	50	11.0	12.2	28.9	9
	40	275/40R20	106Y	XL	2094	50	9.5	10.8	28.9	9
		245/45R20	103Y	XL	1929	50	8.0	9.4	28.9	9
	45	255/45R20 *	105Y	XL	2039	50	8.5	9.8	29.1	9
		265/45R20	108Y	XL	2205	50	9.0	10.4	29.5	9
		275/45R20	110W	XL	2337	50	9.0	10.7	29.8	10
		245/50R20	102V		1874	44	7.5	10.0	29.7	10
	50	255/50R20	109V	XL	2271	50	8.0	10.4	30.1	10
		265/50R20	111V	XL	2403	50	8.5	10.9	30.6	10
		285/50R20	116V	XL	2756	50	9.0	11.7	31.3	9
		235/55R20 *	105W	XL	2039	50	7.5	9.7	30.1	9
	55	255/55R20 *	110Y	XL	2337	50	8.0	10.7	30.9	10
		275/55R20	117V	XL	2833	50	8.5	11.2	31.9	11
		60	275/60R20	115H		2679	44	8.0	10.9	33.0
19	45	225/45R19	96W	XL	1565	50	7.5	9.0	27.0	10
	50	255/50R19	107W	XL	2149	50	8.0	10.1	29.1	10
		225/55R19	99V		1709	44	7.0	9.2	28.8	10
	55	235/55R19	105V	XL	2039	50	7.5	9.6	29.2	10
		255/55R19	111Y	XL	2403	50	8.0	10.3	30.2	9
	60	255/60R19 *	113W	XL	2535	50	7.5	10.2	31.1	10
18	55	215/55R18	99V	XL	1709	50	7.0	8.8	27.4	10
		225/55R18	98V		1653	44	7.0	9.1	27.8	10
		235/55R18	104W	XL	1984	50	7.5	9.5	28.1	10
		255/55R18	109W	XL	2271	50	8.0	10.4	29.0	12
	60	235/60R18	107W	XL	2149	50	7.0	9.5	29.1	10
		245/60R18	105V		2039	44	7.0	9.8	29.6	10
		265/60R18	114V	XL	2601	50	8.0	10.7	30.5	11

* Newly released sizes

TRU-TRAC SU / UTQG 440 A A / M+S									
RIM DIAMETER	SERIES	SIZE	LOAD INDEX / SPEED SYMBOL	MAXIMUM LOAD	MAX. INFLATION PRESSURE	RIM WIDTH	SECTION WIDTH	OVERALL DIAMETER	TREAD DEPTH
				LBS	PSI	INCHES	INCHES	INCHES	32NDS
18	65	235/65R18*	106W	2094	44	7.0	9.4	30.0	10
		255/65R18*	111H	2403	44	7.5	10.2	31.0	10
17	65	235/65R17*	108V XL	2205	50	6.5	9.4	29.0	10
16	65	215/65R16	98H	1653	44	6.5	8.7	27.0	10

* Newly released sizes

UPCOMING SIZES			
RIM DIAMETER	SERIES	SIZE	LI/SS
22	30	235/30R22	90W XL
		245/30R22	92W XL
		295/30R22	103Y XL
	35	285/35R22	106W XL
	45	305/45R22	118W XL
21	35	285/35R21	105Y XL
		295/35R21	107Y XL
20	40	265/40R20	104Y XL
		295/40R20	110Y XL
19	50	235/50R19	103V XL
	55	245/55R19	103Y
18	60	255/60R18	112V XL
17	60	235/60R17	102H

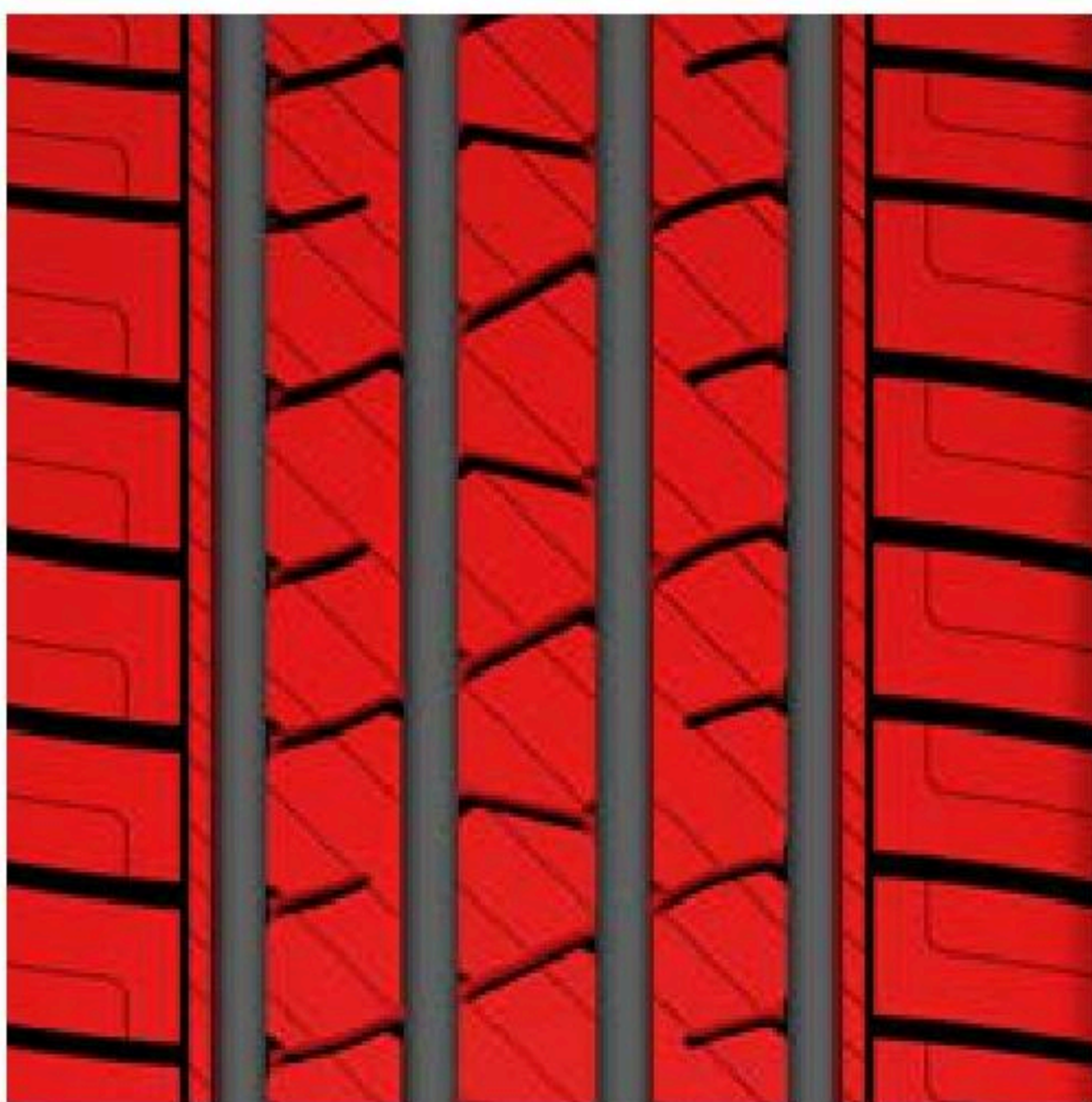
TRU-TRAC HT



True to the Armstrong TRU-TRAC legacy, this Highway Terrain tire provides greater towing ability and increased grip under skidding conditions. An optimized curved tread increases tire rigidity and reduces rolling resistance, while a noise-blocking bar reduces premature wear and road traction noise.

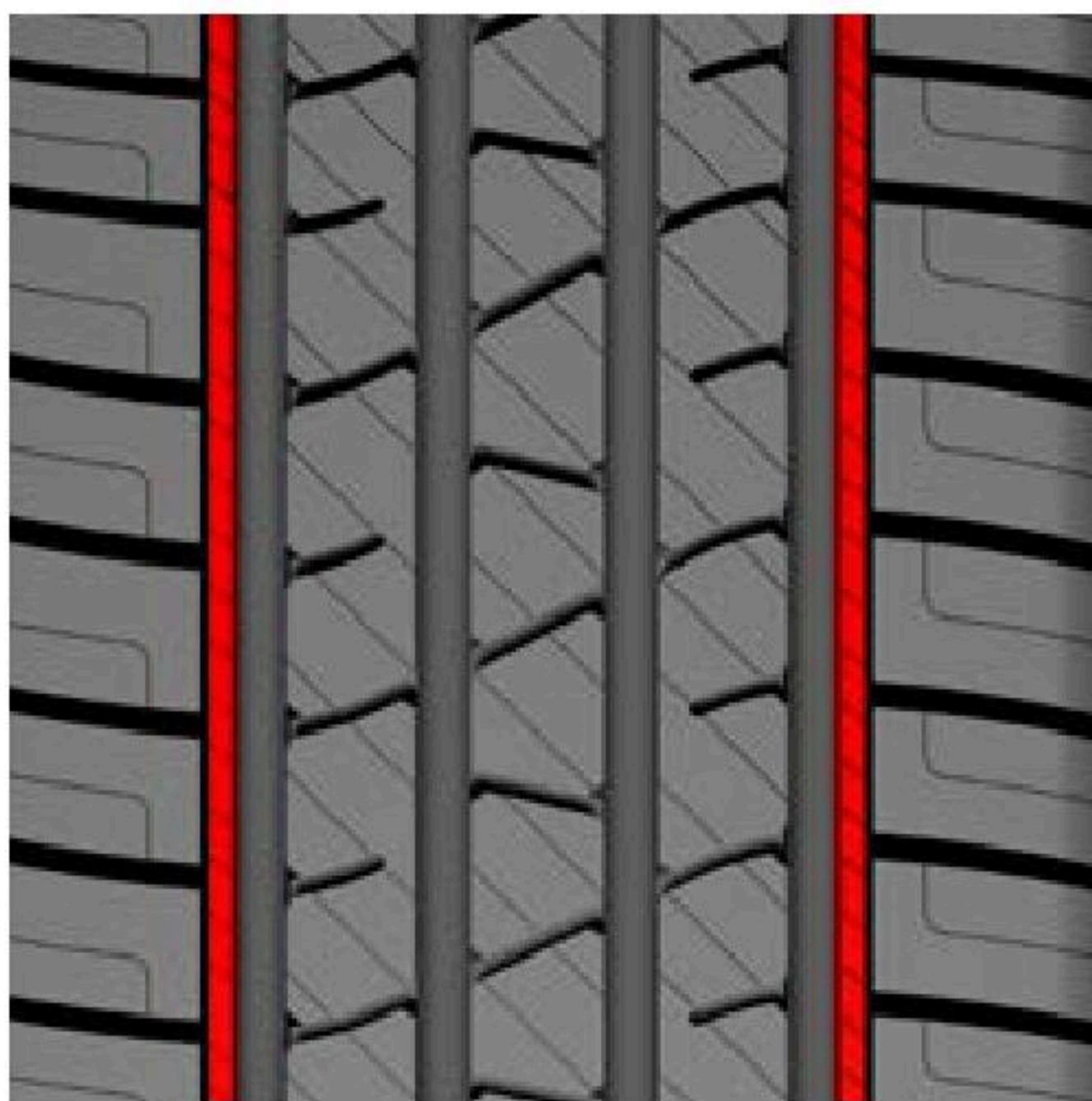


6 YEAR LIMITED WARRANTY



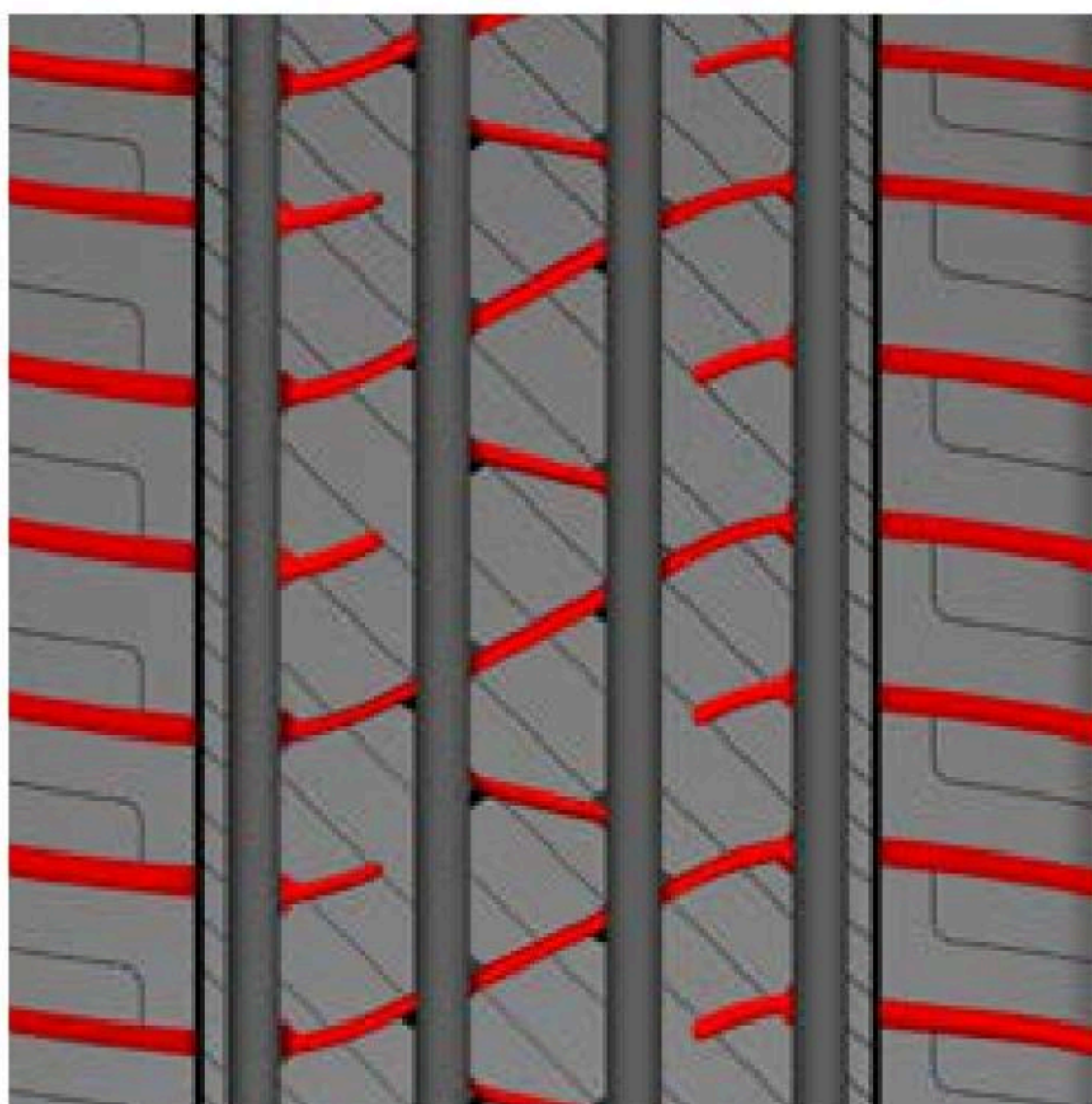
A SPECIALLY ENGINEERED TREAD.

A specially engineered tread design provides greater towing ability on the highways.



A NOISE-BLOCKING BAR.

A noise-blocking bar on the tire shoulders delays premature wear and reduces sound that is generated by road traction.



CONTINUOUS OPEN LATERAL CHANNELS.

Continuous open lateral channels increase tire grip under skidding conditions and provide enhanced safety.



AN OPTIMIZED CURVED TREAD PROFILE.

An optimized curved tread profile increases rigidity and reduces rolling resistance.

P METRIC

TRU-TRAC HT / UTQG 740 A A / M+S

RIM DIAMETER	SERIES	SIZE	LOAD INDEX / SPEED SYMBOL		MAXIMUM LOAD	MAX. INFLATION PRESSURE	RIM WIDTH	SECTION WIDTH	OVERALL DIAMETER	TREAD DEPTH
					LBS	PSI	INCHES	INCHES	INCHES	32NDS
20	55	275/55R20	117H	XL	2833	50	8.5	11.0	31.9	13
	60	275/60R20	115H		2679	44	8.0	11.0	33.0	13
18	60	265/60R18	110H		2337	44	8.0	10.6	30.5	13
		285/60R18	116H		2756	44	8.5	11.5	31.5	13
	65	265/65R18	114H		2600	44	8.0	10.7	31.5	12
	70	255/70R18	113H		2535	44	7.5	10.1	32.0	12
		265/70R18	116H		2756	44	8.0	10.8	32.7	12
	17	65	225/65R17	102H		1874	44	6.5	9.1	28.4
235/65R17			108V	XL	2205	50	7.0	9.4	29.0	11
245/65R17			107H		2149	44	7.0	9.8	29.5	11
265/65R17			112H		2469	44	8.0	10.7	30.5	12
70		265/70R17	115H		2679	44	8.0	10.8	31.7	11
16		70	215/70R16	100H		1764	44	6.5	8.8	27.8
	225/70R16		103H		1929	44	6.5	9.1	28.3	11
	235/70R16		106H		2094	44	7.0	9.6	29.0	11
	245/70R16		111H	XL	2403	50	7.0	9.8	29.4	11
	265/70R16		112H		2469	44	8.0	10.7	30.4	11
	15		75	235/75R15	109H	XL	2271	50	6.5	9.3

UPCOMING SIZES

RIM DIAMETER	SERIES	SIZE	LI/SS
18	60	225/60R18	104H XL
17	70	245/70R17	110T
16	65	235/65R16	103H
	70	255/70R16	111T
	75	265/75R16	116T

LT METRIC

TRU-TRAC HT / M+S

RIM DIAMETER	SERIES	SIZE	PR	LOAD INDEX / SPEED SYMBOL	MAXIMUM LOAD (SINGLE)	MAXIMUM LOAD (DUAL)	MAX. INFLATION PRESSURE	RIM WIDTH	SECTION WIDTH	OVERALL DIAMETER	TREAD DEPTH
					LBS	LBS	PSI	INCHES	INCHES	INCHES	32NDS
18	65	LT 275/65R18	10	123/120R	3415	3085	80	8.0	10.8	32.1	16
	70	LT 275/70R18	10	125/122S	3640	3305	80	8.0	10.7	32.8	16
17	70	LT 265/70R17	10	121/118T	3195	2910	80	8.0	10.5	31.7	16
		LT 285/70R17	10	121/118S	3195	2910	80	8.0	11.1	32.8	16
	75	LT 245/75R17	10	121/118S	3195	2910	80	7.0	9.8	31.5	15
	80	LT 235/80R17	10	120/117R	3085	2835	80	6.5	9.4	31.7	14
	16	75	LT 225/75R16	10	115/112T	2680	2470	80	6.0	8.7	29.3
LT 245/75R16			10	120/116S	3042	2755	80	7.0	9.6	30.5	15
LT 265/75R16			10	123/120S	3415	3085	80	7.5	10.5	31.6	16
LT 285/75R16			10	126/123R	3750	3415	80	8.0	11.7	32.6	17
85		LT 235/85R16	10	120/116S	3042	2755	80	6.5	9.6	31.6	15

UPCOMING SIZES

RIM DIAMETER	SERIES	SIZE	PR	LI/SS
20	65	LT 275/65R20	10	126/123S
17	70	LT 245/70R17	10	119/116S
16	85	LT 215/85R16	10	115/112R

TRU-TRAC AT



True to the Armstrong TRU-TRAC legacy, this All-Terrain tire provides excellent performance on any road, and under tough road conditions delivers high-speed stability, greater steering response, and maximum comfort. Its design also reduces irregular wear and inhibits block wriggling.



6 YEAR LIMITED WARRANTY



FOUR ZIGZAG CIRCUMFERENTIAL GROOVES.
Zigzag grooves provide excellent performance on any road surface.



INTERLOCKING CENTER BLOCKS.
Interlocking center blocks with slanted edges ensure maximum comfort in off-road driving conditions.



RUGGED CASING.
Rugged casing improves high-speed stability and provides greater steering response under tough road conditions.



CONNECTING BRIDGES BETWEEN BLOCKS.
Connecting bridges between shoulder blocks inhibit irregular wear and reduce block wriggling.

P METRIC									
TRU-TRAC AT / UTQG 560 A B / M+S									
RIM DIAMETER	SERIES	SIZE	LOAD INDEX / SPEED SYMBOL	MAXIMUM LOAD	MAX. INFLATION PRESSURE	RIM WIDTH	SECTION WIDTH	OVERALL DIAMETER	TREAD DEPTH
				LBS	PSI	INCHES	INCHES	INCHES	32NDS
20	55	275/55R20	117T XL	2833	50	8.5	10.9	31.9	13
	60	275/60R20	116T XL	2756	50	8.0	10.9	33.0	13
18	60	265/60R18	114T XL	2601	50	8.0	10.6	30.5	13
17	65	225/65R17	106H XL	2094	50	6.5	8.9	28.4	13
		235/65R17	108H XL	2205	50	7.0	9.4	29.1	13
		245/65R17	111T XL	2403	50	7.0	9.6	29.4	13
		265/65R17	116T XL	2756	50	8.0	10.7	30.6	12
	70	265/70R17	116T XL	2756	50	8.0	10.7	31.7	13
16	70	215/70R16	104T XL	1984	50	6.5	8.9	27.8	13
		225/70R16	107T XL	2149	50	6.5	9.1	28.3	11
		235/70R16	109T XL	2271	50	7.0	9.6	29.0	13
		245/70R16	111T XL	2403	50	7.0	9.8	29.4	13
		265/70R16	116T XL	2756	50	8.0	10.7	30.5	11
15	70	265/70R15	116T XL	2756	50	8.0	10.7	29.6	13
	75	235/75R15	109T XL	2271	50	6.5	9.3	28.7	13

LT METRIC											
TRU-TRAC AT / M+S											
RIM DIAMETER	SERIES	SIZE	PR	LOAD INDEX / SPEED SYMBOL	MAXIMUM LOAD (SINGLE)	MAXIMUM LOAD (DUAL)	MAX. INFLATION PRESSURE	RIM WIDTH	SECTION WIDTH	OVERALL DIAMETER	TREAD DEPTH
					LBS	LBS	PSI	INCHES	INCHES	INCHES	32NDS
20	55	LT 285/55R20	10	122/119S	3305	3000	80	9.0	11.2	33.7	15
		LT 305/55R20	10	121/118S	3195	2910	65	9.5	12.1	33.2	16
	60	LT 325/60R20	10	126/123R	3750	3415	65	9.5	12.9	35.3	16
	65	LT 275/65R20	10	126/123S	3750	3415	80	8.0	10.7	34.1	16
18	65	LT 325/65R18	10	127/124R	3860	3525	65	9.5	13.3	34.5	17
17	70	LT 265/70R17	10	121/118S	3195	2910	80	8.0	10.6	31.7	16
		LT 285/70R17	10	121/118S	3195	2910	80	8.5	11.2	32.7	17
	75	LT 245/75R17	10	121/118S	3195	2910	80	7.0	9.8	31.4	15
	80	LT 235/80R17	10	120/117R	3085	2835	80	6.5	9.4	31.8	15
16	70	LT 305/70R16	10	124/121R	3525	3195	65	9.0	12.5	32.7	17
		LT 225/75R16	10	115/112S	2680	2470	80	6.0	8.7	29.2	16
		LT 245/75R16	10	120/116S	3042	2755	80	7.0	9.8	30.4	16
		LT 265/75R16	10	123/120R	3415	3085	80	7.5	10.6	31.6	15
	75	LT 315/75R16	10	127/124R	3860	3525	65	8.5	12.7	34.5	17
15	85	LT 235/85R16	10	120/116S	3042	2755	80	6.5	9.5	31.6	16
	Flotation	LT 31X10.50R15	6	109S	2270	-	51	8.5	10.5	30.5	15

TRU-TRAC AT II



The **TRU-TRAC AT II** is the 2nd generation “All Terrain” pattern feature a distinctive block pattern design and premium compound, allowing drivers to navigate challenging terrains with ease and confidence. Whether traversing rough or muddy surfaces, this pattern provide a smooth ride and become the leaders on the road.



6 YEAR LIMITED WARRANTY



A DYNAMIC TREAD DESIGN WITH RIGID SHOULDER BLOCKS.

Has been optimized to withstand impacts and provide superior grip performance in all types of road conditions.



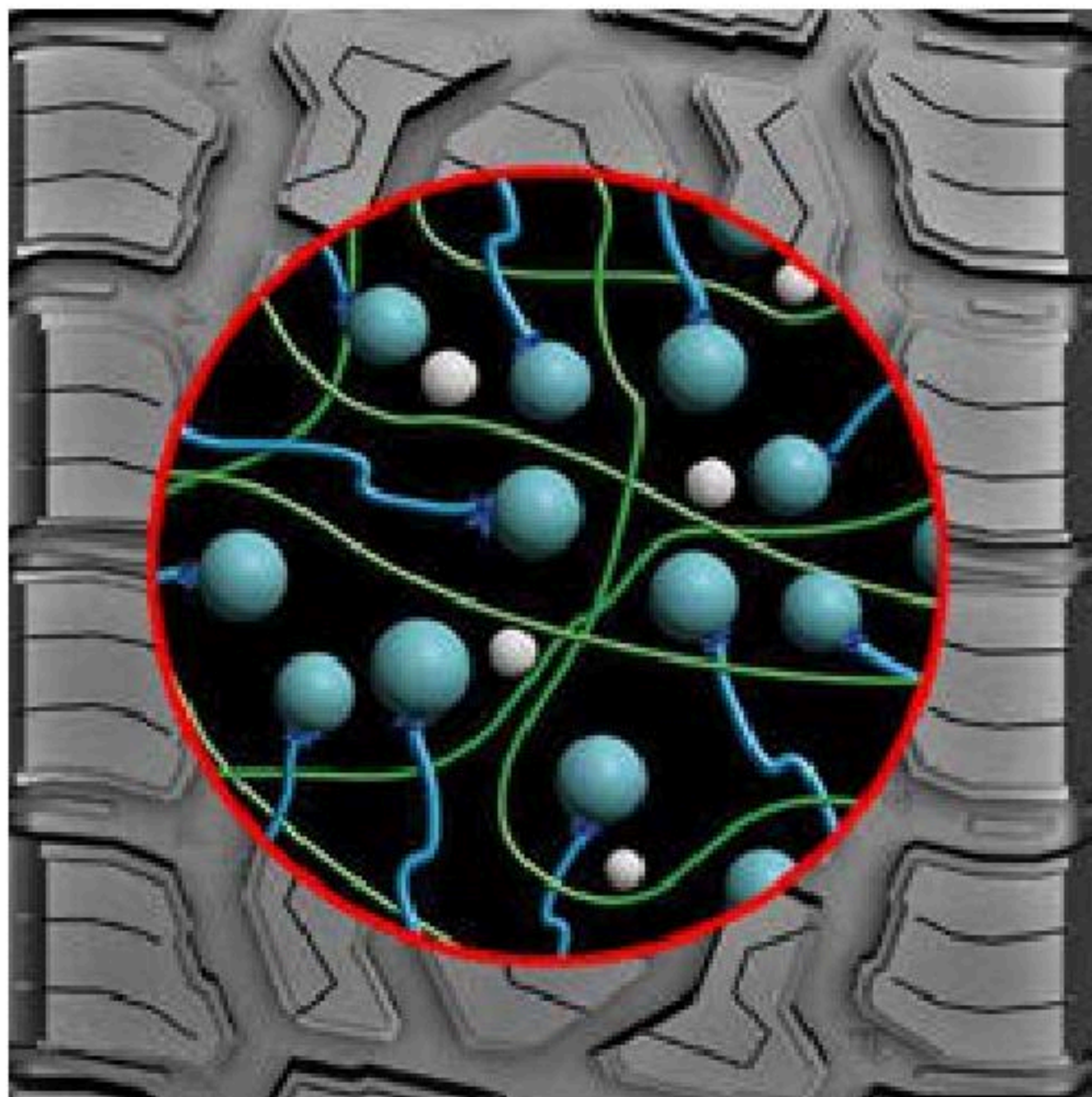
ENGINEERED GROOVES OF DIFFERENT WIDTHS.

Effectively reduced noise levels, resulting in a more comfortable driving experience.



THE REINFORCED SIDEWALL.

Provides a robust defense against any potential damage or side traction occurring in the critical sidewall failure zone.



A SPECIAL RUBBER COMPOUND.

Is utilized to boost the tire’s ability to withstand tearing and enhance its resistance to friction on all road conditions.

TRU-TRAC AT II / UTQG 600 A B / M+S									
RIM DIAMETER	SERIES	SIZE	LOAD INDEX / SPEED SYMBOL	MAXIMUM LOAD	MAX. INFLATION PRESSURE	RIM WIDTH	SECTION WIDTH	OVERALL DIAMETER	TREAD DEPTH
				LBS	PSI	INCHES	INCHES	INCHES	32NDS
22	45	285/45R22	114H XL	2601	50	9.5	11.6	31.9	13
20	50	265/50R20	111T XL	2403	50	8.5	11.1	30.6	12
18	60	265/60R18	110T	2337	44	8.0	10.9	30.4	12
	65	265/65R18	114T	2601	44	8.0	10.7	31.3	13
		275/65R18	116T	2756	44	8.0	10.9	31.9	12
17	65	265/65R17	116T XL	2756	50	8.0	10.7	30.4	13
	70	285/70R17	117T	2833	44	8.5	11.4	32.5	13
16	70	255/70R16	111S	2403	44	7.5	10.2	29.8	13
	75	245/75R16	111S	2403	44	7.0	9.7	30.2	13
15	75	215/75R15	100S	1764	44	6.0	8.4	27.4	13

UPCOMING SIZES			
RIM DIAMETER	SERIES	SIZE	LI/SS
22	45	305/45R22	118SXL
20	50	305/50R20	120SXL
17	65	225/65R17	102T
		235/65R17	108HXL
		245/65R17	111TXL

TRU-TRAC AT II / M+S											LT METRIC
RIM DIAMETER	SERIES	SIZE	PR	LOAD INDEX / SPEED SYMBOL	MAXIMUM LOAD (SINGLE)	MAXIMUM LOAD (DUAL)	MAX. INFLATION PRESSURE	RIM WIDTH	SECTION WIDTH	OVERALL DIAMETER	TREAD DEPTH
					LBS	LBS	PSI	INCHES	INCHES	INCHES	32NDS
20	55	LT 275/55R20	10	120/117S	3085	2835	80	8.5	11.0	31.7	16
		LT 305/55R20	12	125/122S	3640	3305	80	9.5	12.3	33.1	17
	60	LT 265/60R20	10	121/118S	3195	2910	80	8.0	10.5	32.3	17
		LT 275/60R20	10	123/120S	3415	3085	80	8.0	10.7	32.8	16
		LT 285/60R20	10	125/122S	3640	3305	80	8.5	11.0	33.3	17
		LT 295/60R20	10	126/123S	3750	3415	80	8.5	11.5	33.7	17
18	65	LT 265/65R18	10	122/119Q	3305	3000	80	8.0	10.4	31.3	17
		LT 275/65R18	10	123/120S	3415	3085	80	8.0	10.9	32.0	17
		LT 285/65R18	10	125/122S	3640	3305	80	8.5	11.3	32.4	16
	70	LT 265/70R18	10	124/121Q	3525	3195	80	8.0	10.3	32.4	17
		LT 275/70R18	10	125/122S	3640	3305	80	8.0	10.6	33.1	17
		LT 295/70R18	10	129/126R	4080	3750	80	8.5	11.4	34.1	17
	Flotation	LT 35x12.50R18	12	128R	3970	-	80	10.0	12.4	34.4	19
17	70	LT 265/70R17	10	123/120S	3195	2910	80	8.0	10.3	31.5	17
		LT 285/70R17	10	126/123S	3195	2910	80	8.5	11.2	32.6	17
		LT 315/70R17	8	121/118S	3195	2910	50	9.5	12.3	34.2	17
	75	LT 285/75R17	10	128/125R	3970	3640	80	8.0	10.8	33.6	17
16	75	LT 285/75R16	10	126/123R	3750	3415	80	8.0	10.9	32.7	16
15	70	LT 235/70R15	10	114/110Q	2600	2335	80	7.0	9.1	27.8	16
	75	LT 235/75R15	10	116/113Q	2755	2535	80	6.5	8.8	28.6	16

UPCOMING SIZES				
RIM DIAMETER	SERIES	SIZE	PR	LI/SS
22	50	LT325/50R22	12	127S
		LT33X12.50R22	12	114R
		LT35X12.50R22	12	121R
20	55	LT295/55R20	10	123/120S
		LT275/65R20	10	126/123S
	65	LT285/65R20	10	127/124S
		LT295/65R20	10	129/126S
	FLOTATION	LT35X11.50R20	10	124R
		LT33X12.50R20	12	119R
		LT35X12.50R20	10, 12	121R, 125Q
		LT37X12.50R20	10	126R
		LT35X13.50R20	12	126R
18	65	LT325/65R18	10	127/124R
		LT245/70R17	10	119/116R
17	70	LT295/70R17	10	121/118R
		LT305/70R17	10	121/118R
		LT235/80R17	10	120/117R
	FLOTATION	LT33X12.50R17	12	124R
		LT35X12.50R17	10	125R
		LT37X12.50R17	8	124R
16	70	LT305/70R16	10	124/121R
		LT265/75R16	10	123/120R
	75	LT295/75R16	10	128/125R

BLU-TRAC VAN



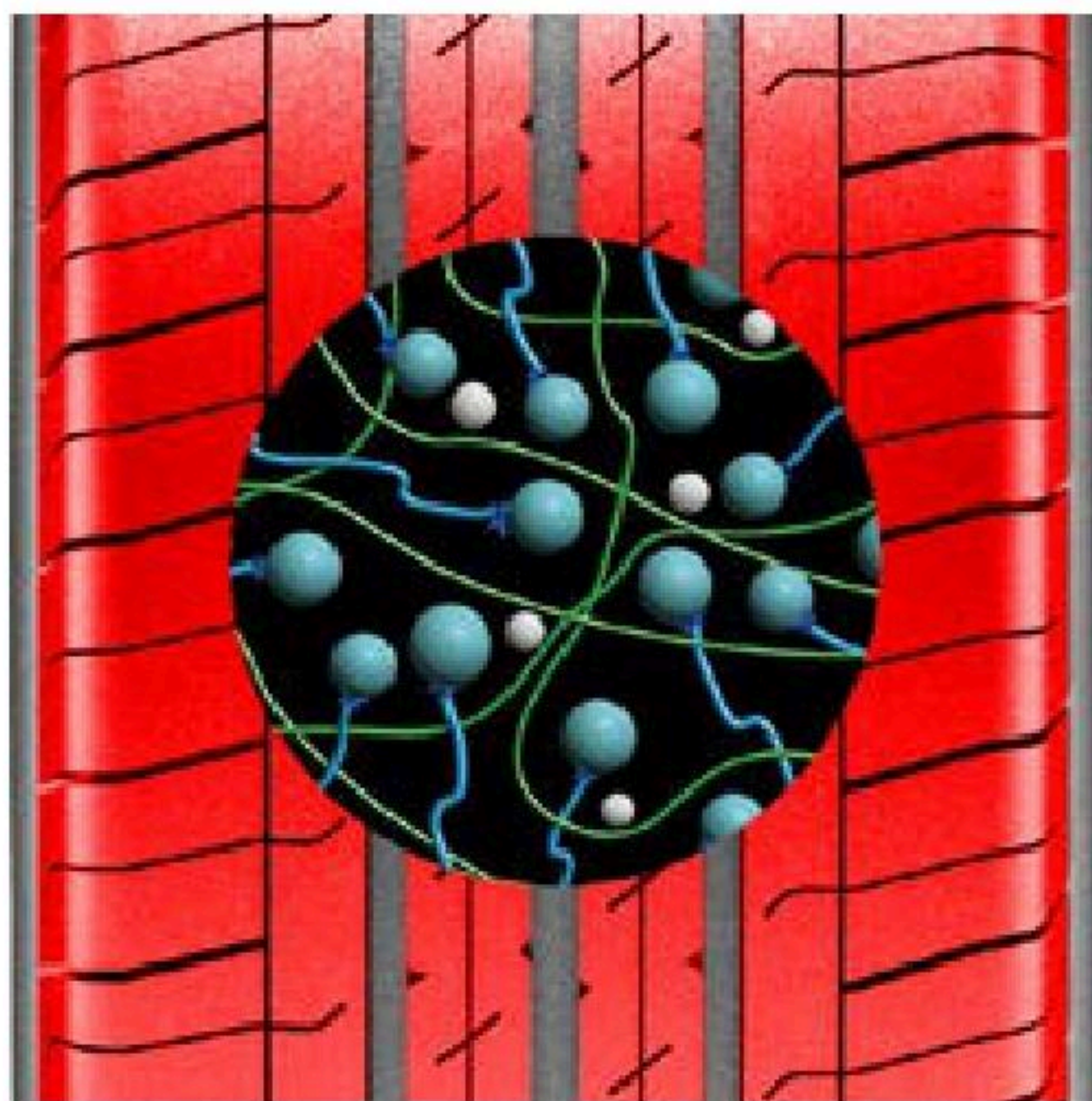
This LTRC summer tire is designed to provide a quiet comfortable ride while giving the driver greater traction on both wet and dry roads. The advanced compound allows for increased fuel efficiency.



6 YEAR LIMITED WARRANTY



OPTIMIZED TREAD DESIGN.
An optimized tread design reduces noise for a quiet and comfortable ride.



ADVANCED TREAD COMPOUND.
This advanced compound provides great traction on wet and dry roads with improved mileage for increased fuel efficiency.



WIDE STRAIGHT GROOVES.
These three grooves help prevent aquaplaning on wet roads and allow for better greater handling.

BLU-TRAC VAN											
RIM DIAMETER	SERIES	SIZE	PR	LOAD & SPEED INDEX	MAXIMUM LOAD (SINGLE)	MAXIMUM LOAD (DUAL)	MAX. INFLATION PRESSURE	RIM WIDTH	SECTION WIDTH	OVERALL DIAMETER	TREAD DEPTH
					LBS	LBS	PSI	INCHES	INCHES	INCHES	32NDS
16	65	195/65R16C	8	104/102T	1984	1874	69	6.0	7.9	26.0	11
		205/65R16C	8	107/105T	2149	1874	69	6.0	8.2	26.5	12
		215/65R16C	8	109/107T	2271	1874	69	6.5	8.7	27.0	12
		225/65R16C	8	112/110T	2469	1874	69	6.5	9.0	27.5	13
		235/65R16C	10	121/119R	3197	1874	83	7.0	9.4	28.0	13
	75	185/75R16C	8	104/102S	1984	1874	69	5.0	7.2	26.9	12
		195/75R16C	8	107/105S	2149	1874	69	5.5	7.7	27.5	13
15	70	195/70R15C	8	104/102R	1984	1874	65	6.0	7.9	25.8	11
		225/70R15C	8	112/110R	2469	1874	65	6.5	9.0	27.4	13
14	65	175/65R14C	6	90/88T	1323	1874	54	5.0	7.0	23.0	13
	70	165/70R14C	6	89/87R	1279	1874	54	5.0	6.7	23.1	10

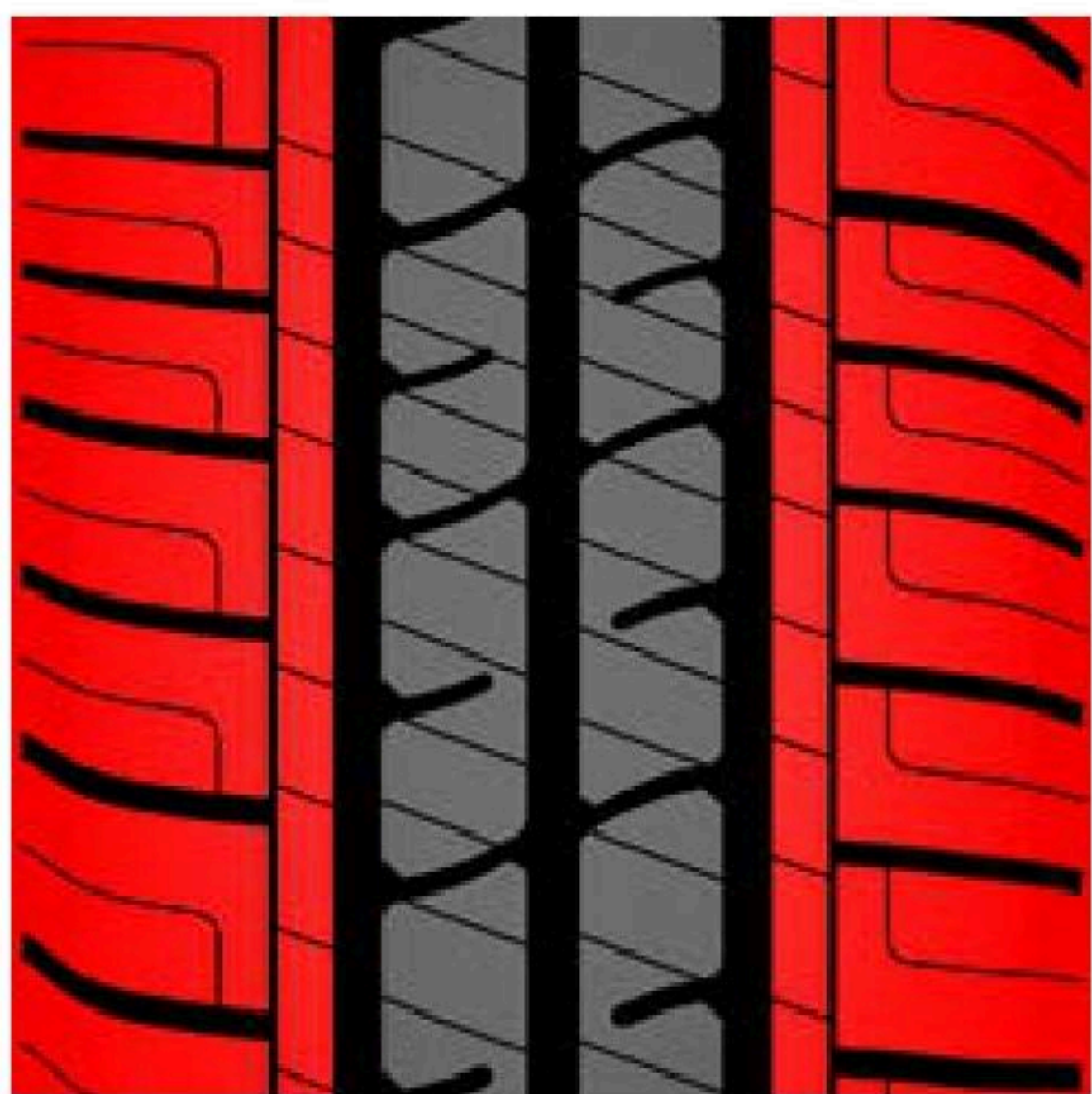
TRU-TRAC VAN



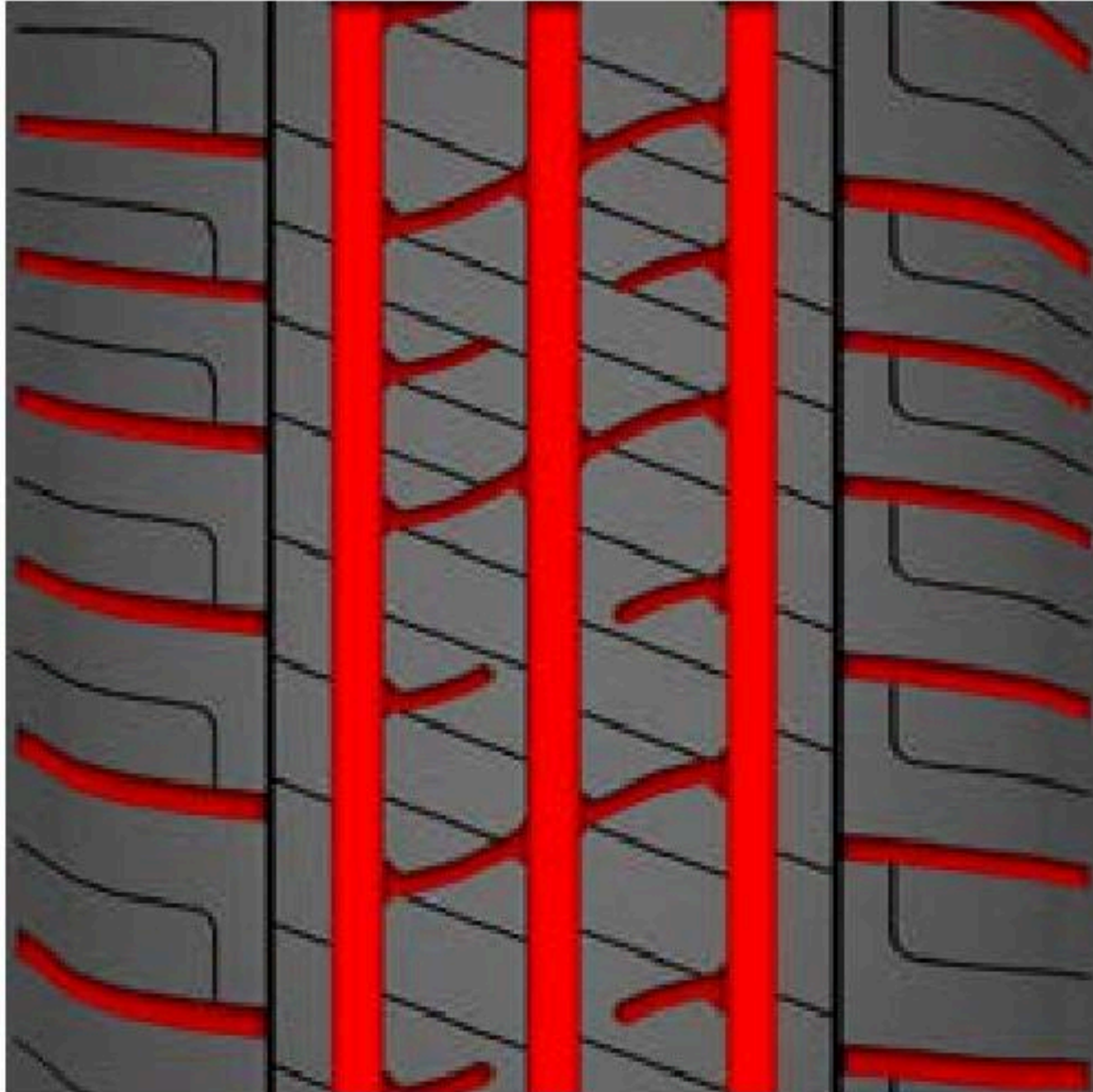
This Van tire is designed to provide a quiet, comfortable ride while giving the driver greater traction on both wet and dry roads. The advanced compound allows for increased fuel efficiency.



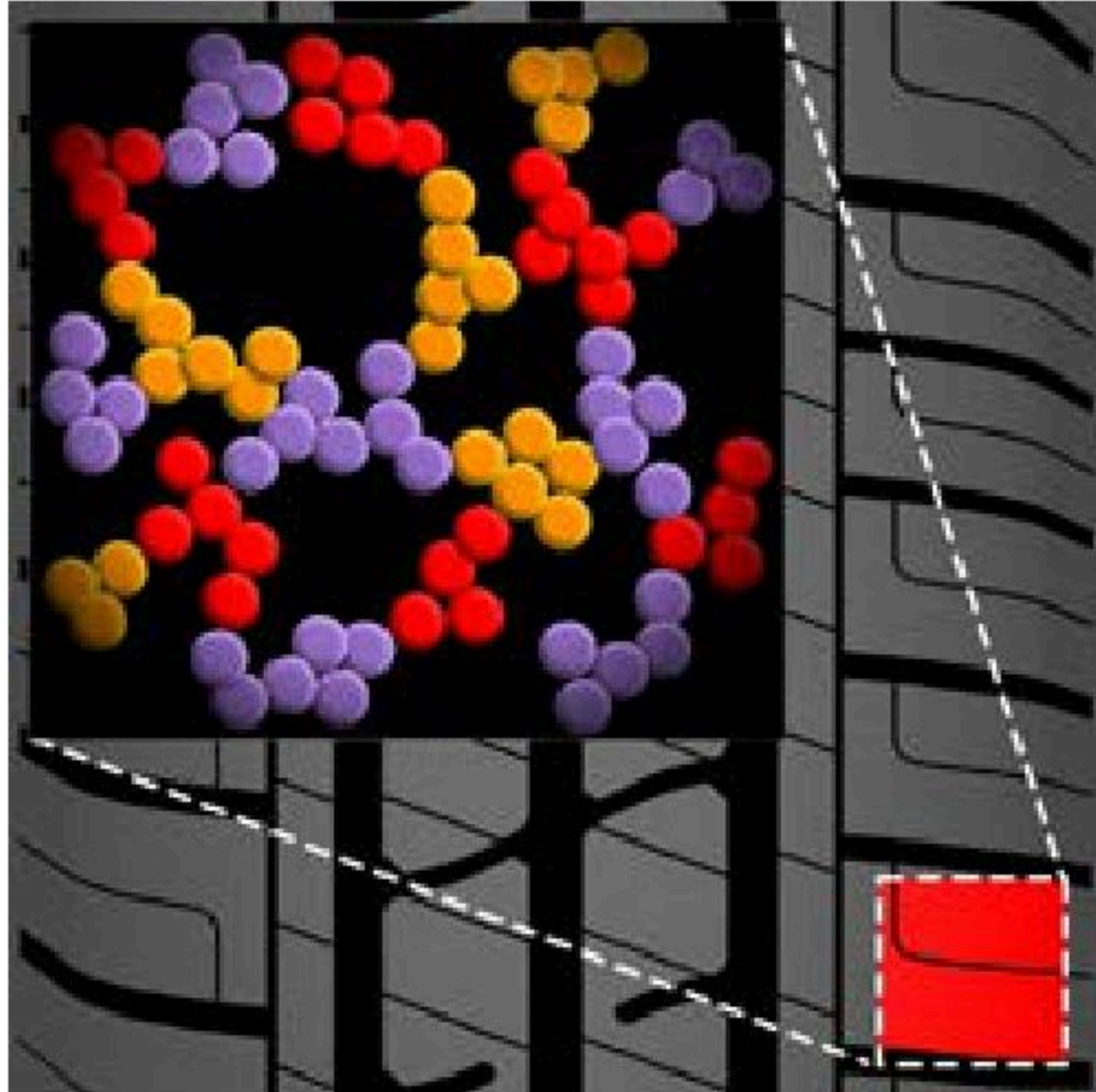
6 YEAR LIMITED WARRANTY



LARGE SHOULDER BLOCK WITH A NOISE-BLOCKING BAR.
Reducing noise at shoulders area delays premature wear and reduces sound that is generated by road traction.



INFLECTIONAL VERTICAL GROOVES AND SLANTING HORIZONTAL CHANNELS.
Increase tire grip with shorter braking distance providing enhanced safety.



SPECIAL COMPOUND.
Designed to resist chipping and tearing, providing excellent durability, delivering longer mileage.

TRU-TRAC VAN / M+S											
RIM DIAMETER	SERIES	SIZE	PR	LOAD & SPEED INDEX	MAXIMUM LOAD (SINGLE)	MAXIMUM LOAD (DUAL)	MAX. INFLATION PRESSURE	RIM WIDTH	SECTION WIDTH	OVERALL DIAMETER	TREAD DEPTH
					LBS	LBS	PSI	INCHES	INCHES	INCHES	32NDS
16	LTRC	205R16C	8	110/108Q	2335	2205	65	6.0	8.5	29.1	11
15	70	215/70R15C	8	109/107T	2270	2150	65	6.5	8.7	27.0	11
		225/70R15C	8	112/110T	2470	2337	65	6.5	9.0	27.6	11
	LTRC	195R15C	8	106/104R	2095	1985	65	5.5	7.8	27.0	10
	75	205/75R14C	8	109/107S	2270	2150	68	5.5	7.9	26.2	11
14	LTRC	185R14C	8	102/100R	1875	1765	65	5.5	7.4	25.5	10
		195R14C	8	106/104S	2095	1985	65	5.5	7.7	26.3	11

armstrong-mea.com

PCR/MEA/JUN/2025

